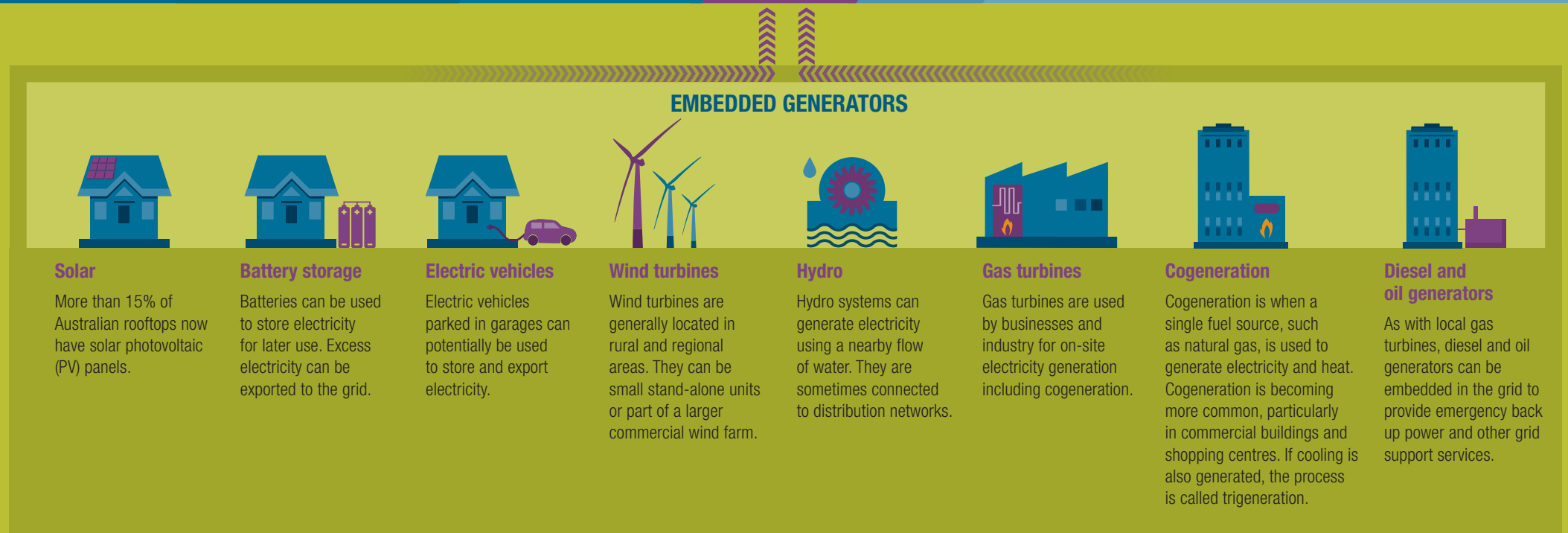
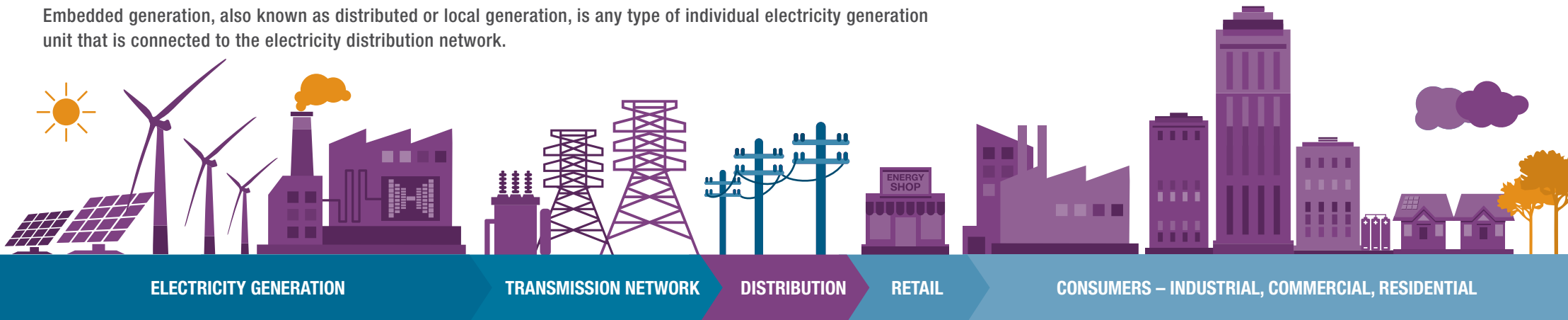


# AUSTRALIAN ENERGY MARKET COMMISSION

## WHAT IS EMBEDDED GENERATION?

Embedded generation, also known as distributed or local generation, is any type of individual electricity generation unit that is connected to the electricity distribution network.



Embedded generation can take many forms, such as solar photovoltaic (PV) rooftop panels, wind turbines, small-scale gas generators and diesel engines.

Electricity consumers are increasingly seeking to generate their own power. People with the ability to generate electricity may still need to source power from the grid or they might choose to sell their excess electricity back into the market.