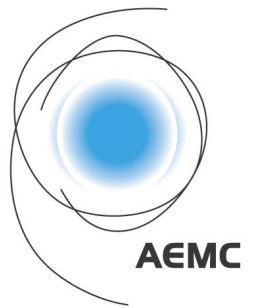
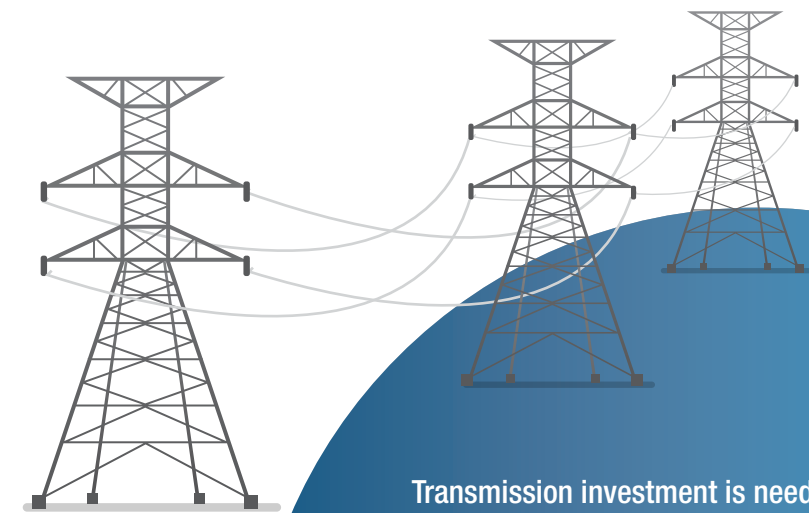
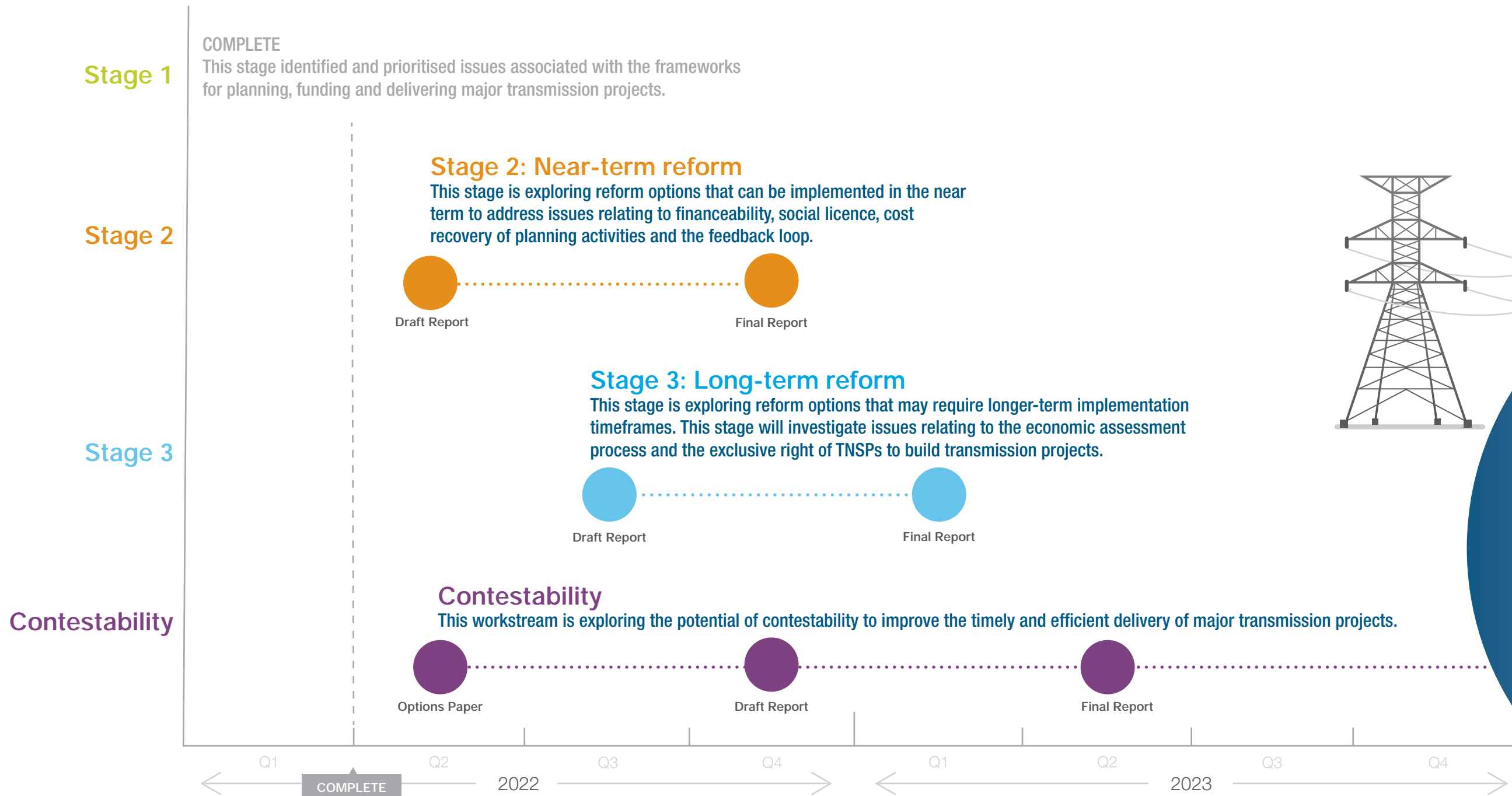


TRANSMISSION PLANNING AND INVESTMENT REVIEW

Exploring options to support the timely and efficient delivery of transmission projects that will benefit consumers



Timeline to progress the Review



Transmission investment is needed to support the energy transition.

But we need to ensure that this investment creates the best possible outcomes for consumers.

That's why the AEMC is working with stakeholders to identify and develop solutions that will support the timely and efficient delivery of major projects.